

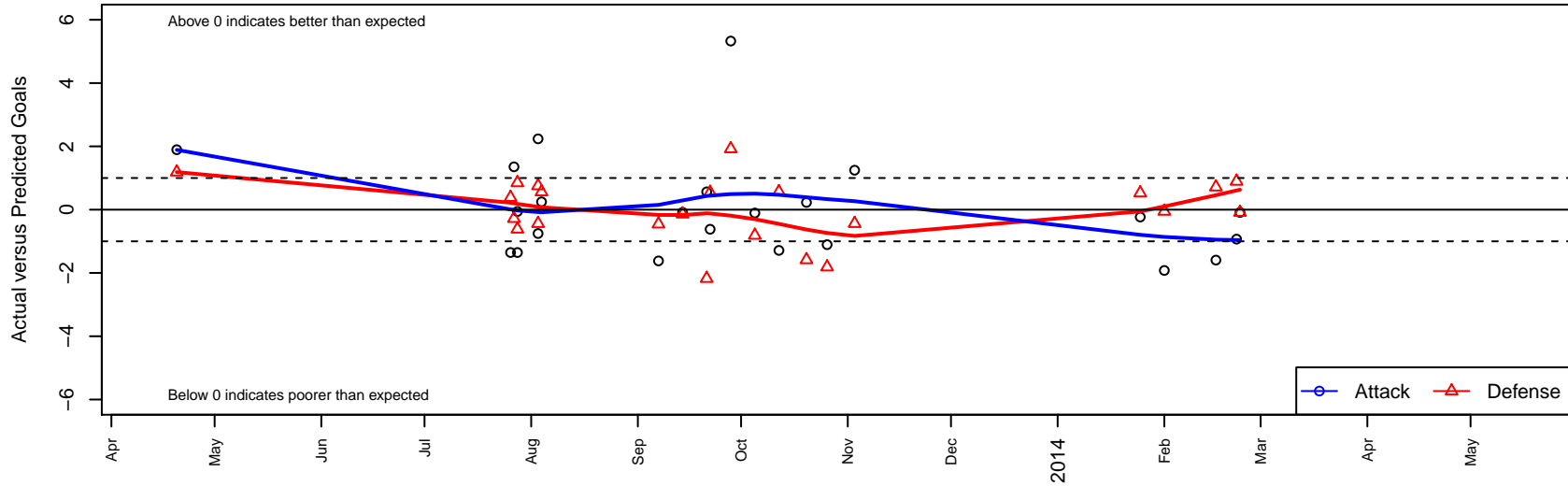
Pacific FC White-Cheetahs B98

Pacific FC
 Battleground, WA
 B98 total strength=1399
 attack=7.82 defense=8.14
 fall league = PML B98 U15
 alt names used:
 Pacific FC White (Cheetahs) B98
 Pacific FC Cheetahs
 Pacific FC B98 Cheetahs
 Pacific FC 98 Cheetahs
 Pacific FC Cheetahs
 Pacific FC 98 Cheetahs
 Pacific FC B98 Cheetahs
 Pacific FC 98 - White
 PACIFIC FC 98 CHEETAHS (WA)
 Pacific FC 98 White

Venues played:
 PML Spr U10-19
 Oswego Nike Cup Silver U15
 Cowlitz Kickoff Boys HS
 PML B98 U15
 Challenge Cup B98 Division 2 - Challenge 2



Pacific FC White-Cheetahs B98
 Dots are actual minus expected GF (blue circles) and GA (red triangles).
 Blue line is smoothed change in attack strength. Red is smoothed change in defense strength.



	date	home		away		venue	pred.home	pred.away
23327	2014-02-23	Pacific FC White-Cheetahs B98	1	Crossfire Select Manao B98	2	Challenge Cup B98 Division 2 – Challenge 2	1.09	1.91
23111	2014-02-22	Eastside FC Blue B98	0	Pacific FC White-Cheetahs B98	1	Challenge Cup B98 Division 2 – Challenge 2	0.89	1.93
22728	2014-02-16	WPFC Navy B98	0	Pacific FC White-Cheetahs B98	2	Challenge Cup B98 Division 2 – Challenge 2	0.71	3.59
22079	2014-02-01	Pacific FC White-Cheetahs B98	0	WA Rush Nero B98	1	Challenge Cup B98 Division 2 – Challenge 2	1.92	0.95
21783	2014-01-25	Snohomish United Red B98	0	Pacific FC White-Cheetahs B98	3	Challenge Cup B98 Division 2 – Challenge 2	0.53	3.23
17341	2013-11-03	Timber Barons B98	2	Pacific FC White-Cheetahs B98	3	PML B98 U15	1.56	1.75
16092	2013-10-26	Pacific FC White-Cheetahs B98	0	Santos FC Cruzeiro B99	3	PML B98 U15	1.11	1.19
15436	2013-10-20	Pacific FC White-Cheetahs B98	3	Pacific FC Blue-Strikers B98	3	PML B98 U15	2.77	1.41
14124	2013-10-12	Academia Leon B99	1	Pacific FC White-Cheetahs B98	0	PML B98 U15	1.56	1.29
13113	2013-10-05	Pacific FC White-Cheetahs B98	1	Santos FC Cruzeiro B99	2	PML B98 U15	1.11	1.19
12139	2013-09-28	Pacific FC White-Cheetahs B98	7	FC El Tri Spartans B98	0	PML B98 U15	1.67	1.92
11538	2013-09-22	Pacific FC White-Cheetahs B98	4	Pacific FC Orange-Fire B98	0	PML B98 U15	4.62	0.54
11210	2013-09-21	Washington Timbers Burgundy B98	3	Pacific FC White-Cheetahs B98	3	PML B98 U15	0.82	2.44
10233	2013-09-14	Santos FC Chivas B99	1	Pacific FC White-Cheetahs B98	2	PML B98 U15	0.86	2.09
9290	2013-09-07	Pacific FC Orange-Fire B98	1	Pacific FC White-Cheetahs B98	3	PML B98 U15	0.54	4.62
5820	2013-08-04	Pacific FC White-Cheetahs B98	2	Timber Barons B98	1	Cowlitz Kickoff Boys HS	1.75	1.56
5612	2013-08-03	Timber Barons B98	2	Pacific FC White-Cheetahs B98	1	Cowlitz Kickoff Boys HS	1.56	1.75
5614	2013-08-03	Pacific FC White-Cheetahs B98	4	Washington Timbers Crimson B97	0	Cowlitz Kickoff Boys HS	1.76	0.75
5046	2013-07-28	Highline Premier Blue B98	0	Pacific FC White-Cheetahs B98	1	Oswego Nike Cup Silver U15	0.85	1.06
5048	2013-07-28	Pacific FC White-Cheetahs B98	0	PCU Red B98	2	Oswego Nike Cup Silver U15	1.35	1.38
4803	2013-07-27	Pacific FC White-Cheetahs B98	3	Crossfire Oregon –Unk3 B98	1	Oswego Nike Cup Silver U15	1.65	0.72
4579	2013-07-26	PCU Red B98	1	Pacific FC White-Cheetahs B98	0	Oswego Nike Cup Silver U15	1.38	1.35
32	2013-04-20	Pacific FC White-Cheetahs B98	3	Santos FC Cruzeiro B99	0	PML Spr U10-19	1.11	1.19